



Safety is for life.™

PRODUCT INFORMATION



MAXIMUM VENTING EFFICIENCY – MINIMUM WEIGHT

Flameless Venting for Elevators

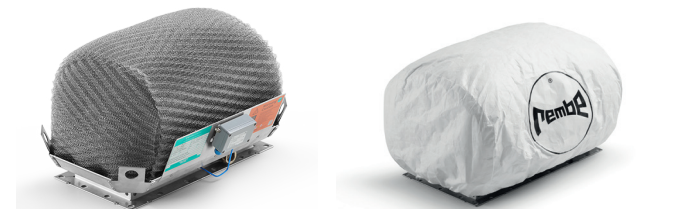
The Q-Ball® E guarantees safe relief of a combustible dust explosion. Efficient cooling inside the Q-Ball® E prevents the flames from escaping and minimizes the effects of the explosion pressure to an insignificant level.

The Q-Ball® E is suitable for flameless venting of mechanical conveyors and can handle explosions with K_{St} values up to 200 bar × m/s.

The Q-Ball® E is available in multiple sizes to match many standard conveyors and elevators. Additionally, the low weight of the Q-Ball® E reduces the need to reinforce the elevator supports. These features make installation simpler and quicker.

Your Advantages

- **Maximum venting efficiency** through full body flameless venting.
- **Easy maintenance** through an integrated inspection opening.
- **Integrated signaling unit** for reliable monitoring.
- **Can be utilized indoors or outdoors.**
- **Simple retrofitting to existing explosion vent installations.**



The sanitary cover protects the Q-Ball® E against dust from outside sources.

Technical Data

K_{St} -Value	≤ 200 bar × m/s
P_{max}	≤ 9 bar
Minimum ignition energy	≥ 3 mJ
Minimum ignition temperature	≥ 380°C
Static response pressure	0.1 bar
Max. red. explosion pressure P_{red}	1.95 bar
Ambient temperature	-40 to +140°F [-40 to +60°C]
Process temperature	-22 to +185°F [-30 to +85°C] (higher temperatures available on request)

Dimensions and Weight

Diameter nominal [mm]	Height in [mm]	Width in [mm]	Length in [mm]	Weight lbs [kg]
180 × 420	15.75 [400]	15.75 [400]	22.44 [570]	33.07 [15]
205 × 610	18.90 [480]	16.54 [420]	30.70 [780]	44.10 [20]
305 × 610	19.69 [500]	20.47 [520]	30.71 [780]	55.12 [25]



ATEX
EC type examination
certificate no.
GEX 19 ATEX 1001X



Meets the
requirements
of NFPA 68

Consulting. Engineering. Products. Service.

REMBE® Inc.

9567 Yarborough Road | Fort Mill, SC 29707, USA | T +1 704 716 7022 | F +1 704 716 7025
info@rembe.us | www.rembe.us